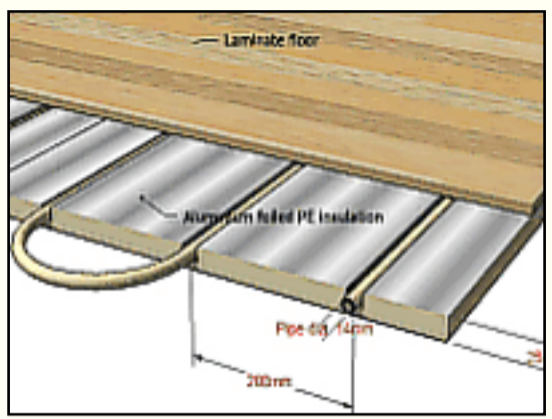


The PEXATHERM Thin UFH systems - For limited floor to ceiling height.

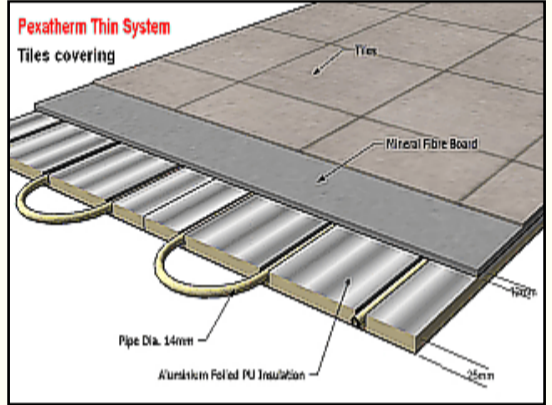
Introduction

The Pexatherm thin system is designed for installation on existing floors. The high performance PU thin insulation board incorporates a thick aluminium foil to diffuse the heat from the PEX 14 mm pipe to the floor. The thick gauge foil ensures maximum heat transfer from the pipe to the floorboards. The system is then covered directly with floor laminate or mineral fibre boards and tiles or carpet. There is no need for thick screed.



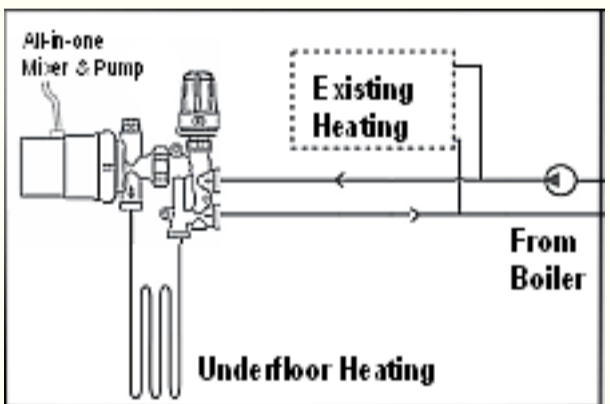
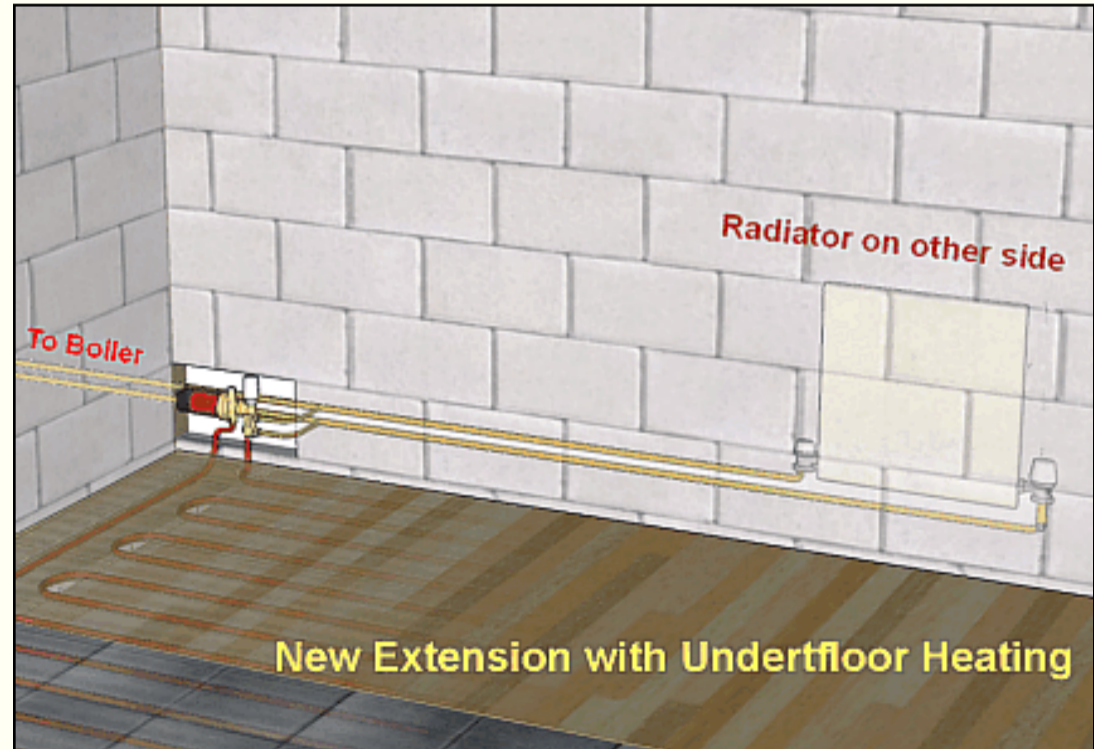
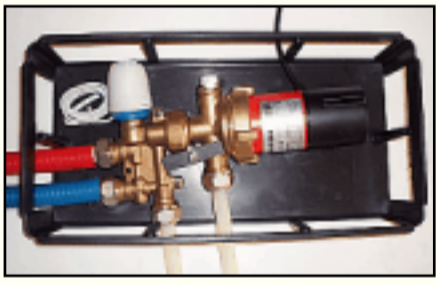
System Design

The Pexatherm combined insulation and heat spreading boards are grooved to accept the smaller PEX 14 mm od PEX pipe. The boards are laid on existing floors and the PEX heating pipe is then clipped into the grooves. These same boards are used with the Pexatherm-e electric underfloor heating, thus reducing heat loss in the floor below. The pipe is then connected to the all-in-one mixer, pump and manifold. Just as in the other Pexatherm systems, since low water temperature in the floor is required. IPPEC also supplies a **low temperature valve** that connects to the radiator or towel rail and then to the flow of the underfloor heating pipe. This system is often used in the bathroom to give warmth to tiled floors and to reduce condensation.



The Package

The grooved boards measure 1200 x 600 x 25 mm. The Pexatherm all-in-one mixer pump set is supplied with 50, 100 or 150 m coils of PEX 14 mm pipe with oxygen barrier. An optional plastic enclosure is available to recess the mixer pump into the wall. This enclosure is the size of one concrete block.



The Primary Connection

The BM-Mini connects to existing heating system of radiators or directly to boiler. The maximum heat load of the Pexatherm Thin system is equivalent to a large radiator. Make sure that the existing heating system has enough spare capacity. This is specially relevant when high heat load is applied to a conservatory.

Applications

The Pexatherm thin system is used in extensions, bathrooms and conservatories or even single rooms. The maximum floor area envisaged with the thin system and all-in-one mixer and pump is about 50 sq. m. The system is designed to be laid on existing solid floors, and ideally those with insulation under the slab to reduce further heat loss through the floor. It is also suitable on first or in between floors such as in flats.

Visit the web shop at www.ippec.co.uk for the prices of Pexatherm UFH Packages

